



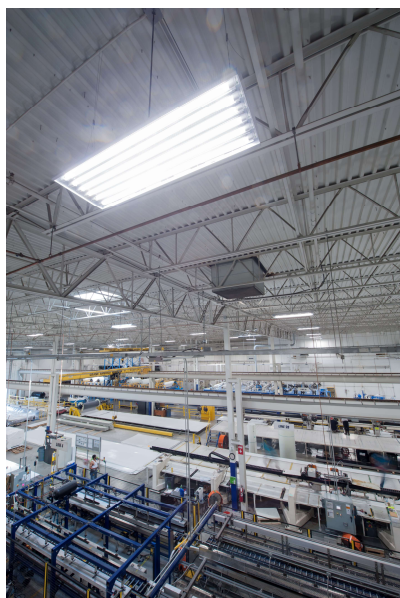
BRAMAL LED

WWW.BRAMALLED.COM

Case Study | Ridge Corporation



NEXT GENERATION OF PREMIUM SIDELINERS



“By installing Bramal LED tubes and fixtures, we have highlighted our corporate focus on efficiency, enhanced our working environment and cut down our maintenance time and costs. Our new lighting solution also helped us save a considerable amount of energy and expense, making it a valuable investment for Ridge Corporation”

Gary Grandominico, President of Ridge Corporation

12.8

Year operating life (17
hours per day)

>1

Year payback period

< \$85,000

Energy savings per year

Ridge Corporation is an innovative company using the most advanced technologies to produce lining systems for the trailer and truck body industry. Using high performance thermoplastic composites coupled with thermoforming capabilities and patent pending sonic welding process. In partnership with Bramal LED they adopted LED technologies to enhance their new manufacturing plant in Columbus Ohio.

Project Objectives

The project's goal was to provide better lighting to Ridge Corp's manufacturing plant in order to improve workplace safety, efficiency and align with their energy conservation goals as a corporation. The company also wanted to benefit financially from the substantial savings in the cost of energy as well as an almost 100% reduction in maintenance costs related to the building lighting.

What We Did

Bramal LED provided hi bay units with their own 6 lamp fixtures and tubes.

The result is up to 70% savings in energy consumption, a clean crisp light and a virtually maintenance free lighting infrastructure. Ballast waste was removed from the overall system thanks to the adaptability of the Bramal LED product that is certified to run on direct AC, further reducing the energy consumption

Results

- > 20% increase in light levels
- Evenly distributed and stable lighting level
- 6 lamp hi bays installed
- < 1 year payback period
- 80,000 hour product life
- > \$1M lifetime savings at current energy costs



Case Study | Ridge Corporation



Conclusion

Ridge Corporation will reduce their lighting energy consumption by up to 70% by switching to LED. Additionally, the LED lights generate over 20% more light output (Lux) providing employees with an environment in which it is easier and safer to work.

Installing Bramal LED lamps and fixtures gives long term savings of over \$1M, with a payback on investment in the first year

For additional information on this and other projects, or to request a visit to one of our case study sites, please contact Bramal LED at the number below



SAVINGS INCURRED FROM CHANGING 15 HID FIXTURES TO 15 LED FIXTURES	
TYPE OF SAVINGS	SAVINGS DURING LIFE SPAN OF LED TUBES +80,000 HRS
Monthly Savings	\$7,296
Product Savings (lamps)	\$2,531
Lifetime (17 hours per day), 365 days	12.8 years
TOTAL SAVINGS IN FIRST YEAR	\$87,555
Lifetime savings	\$1,069,286
ROI (years)	< 1



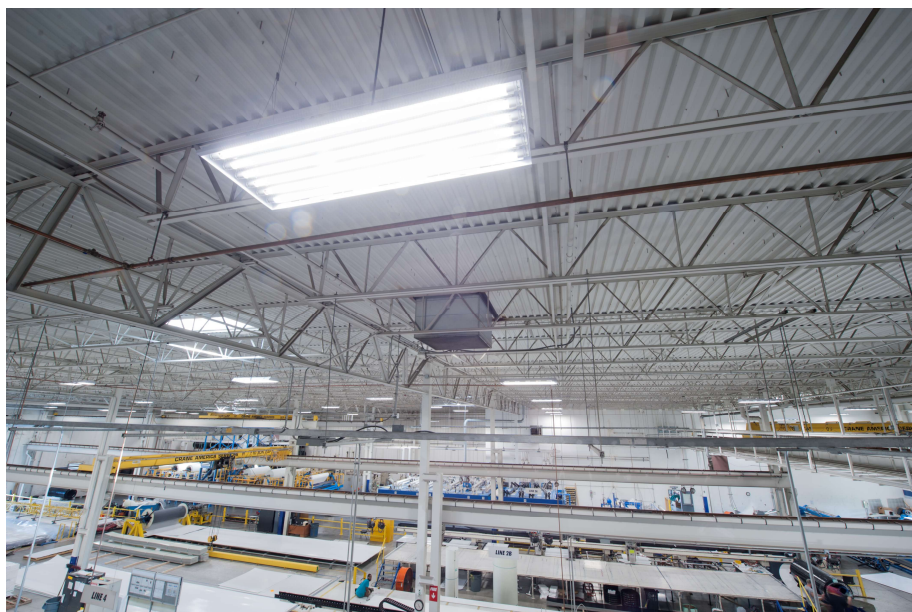
BRAMAL LED

WWW.BRAMALLED.COM

Case Study | Ridge Corporation



NEXT GENERATION OF PREMIUM SIDELINERS





BRAMAL LED

WWW.BRAMALLED.COM

Case Study | Ridge Corporation



NEXT GENERATION OF PREMIUM SIDELINERS





BRAMAL LED

WWW.BRAMALLED.COM

Case Study | Ridge Corporation



NEXT GENERATION OF PREMIUM SIDELINERS





BRAMAL LED

WWW.BRAMALLED.COM

Case Study | Ridge Corporation



NEXT GENERATION OF PREMIUM SIDELINERS



CONTACT US

Phone: (450) 763-1443

Email: info@bramalled.com

Bramalled.com

1415 32nd Ave

Lachine, Quebec

H8T 3J1