



**BRAMAL LED**

# 120 VAC tube solution

Replaces T8 & T12 tubes with direct 120 VAC connection

Lifetime of 50,000 hours, 5 year Warranty

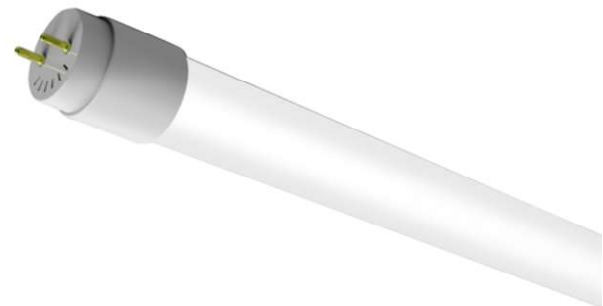


## The Bramal LED tube solution for direct AC connection – Type B

Building on the patented BRAMAL LED multi-purpose tube, we have developed a low-cost AC tube solution for eliminating energy-hungry ballasts and lowering the cost of commercial and industrial lighting. This new development remains consistent with the strict specification requirements of BRAMAL LED, with high quality, low power (15W), a 50,000-hour lifetime, familiar T8 form factor and only requiring a ballast bypass and no additional rewiring.

### FEATURES OF THE BRAMAL LED AC TUBE SOLUTION

- » **SUITABLE for direct connection on alternating current** (see installation instructions for details) (120,277 & 347 VAC versions available see [www.bramalled.com](http://www.bramalled.com) for more information)
- » **MINIMUM OPERATING TIME OF 50,000 HOURS**, (options for 80,000 and 100,000 hours, see [www.bramalled.com](http://www.bramalled.com))
- » **EQUIPPED WITH A UNIQUE INTERNAL CONSTANT CURRENT SOURCE<sup>†</sup>** that ensures electrical regulation throughout its lifespan
- » **VISUAL ANGLE OF 120 DEGREES FOR CLEAR OR FROSTED TUBE - DLC Certified**
- » **LIGHTS UP INSTANTLY NO MATTER THE CLIMATE:** cold, hot or humid
- » **REDUCES ENERGY CONSUMPTION BY UP TO 70%** compared to conventional fluorescent lamps
- » **PRODUCES LESS HEAT:** ideal for applications in refrigerated or air-conditioned environments
- » **PLASTIC AND GLASS construction**
- » **ENVIRONMENTALLY FRIENDLY:** components are RoHS (do not contain lead mercury or cadmium), with zero persistent and volatile organic pollutants
- » **AVAILABLE FORMATS:** 4 FT



TEL.: 450-763-1443  
BRAMALLED.COM



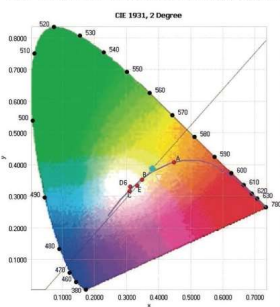
Canadian Owned



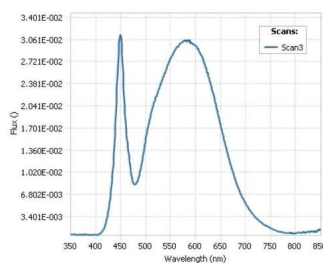
CHARACTERISTICS – LED-T8-4FT-120VAC-XXXX-G13-50

MODEL : T8 LED 4FT		FROSTED TUBE
Energy Consumption		15W – 4000K 15W – 5000K
Input Voltage		120 VAC
Operating Frequencies		60 Hz
Load Factor/DTH % V/A		>0.98-0.99 / 0.16 /6.8%
Light Efficiency (naked lamp)	4000K	146 lm/w
	5000K	146 lm/w
Luminous Power (naked lamp)	4000K	2200 lm
	5000K	2200 lm
Color Rendering Index (IRC)	4000K	>82
	5000K	>82
Standard Color Temperatures		4000K / 5000K
Light Flow Maintenance L <sub>70</sub>		97 %
Operating Ambient Temperature		20°C (-40 to + 40°C)
Length (FACE TO FACE)		47 5/32° ou 1198mm 47 23/32° ou 1212mm
Lifetime		50,000 hours
Warranty		5 years
Standard End cap		G13
Certifications		<b>cULus</b> <b>DLC</b>

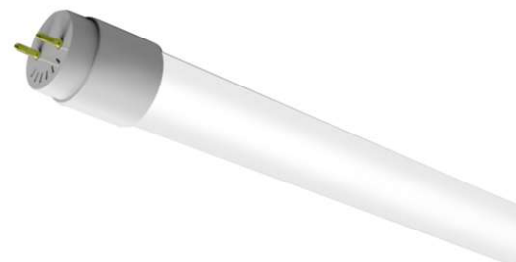
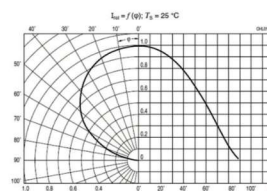
CIE 1931 CHROMATICITY DIAGRAM



SPECTRAL FLUX GRAPH



RADIATION CHARACTERISTIC



For more information, please send an email to [info@Bramalled.com](mailto:info@Bramalled.com) or call at 450-763-1443.

To place an order, please contact [PO@Bramalled.com](mailto:PO@Bramalled.com).

Please note that the values of the datasheet have a margin of +/- 3 %.



TEL.: 450-763-1443  
BRAMALLED.COM



Canadian Owned

